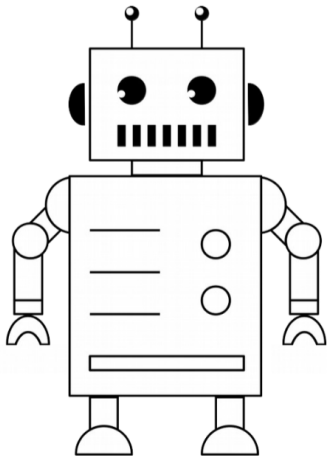


Robot Description & Illustration



Field of Application

Exposure to

robot

settings

Robot Task Specification

Robot Morphology

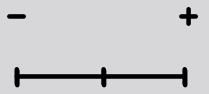
Degree of Robot Autonomy

a z t

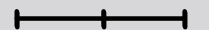
appearance
communication
movement
context

a (anthropomorphic),
z (zoomorphic),
t (technical)

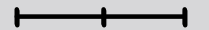
information acquisition



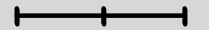
information analyses



decision-making



action implementation



Human Role

Communication Channel

Proximity

input

temporal

physical

Team Composition

$$N_H = N_R$$

$$N_H > N_R$$

$$N_H < N_R$$

output